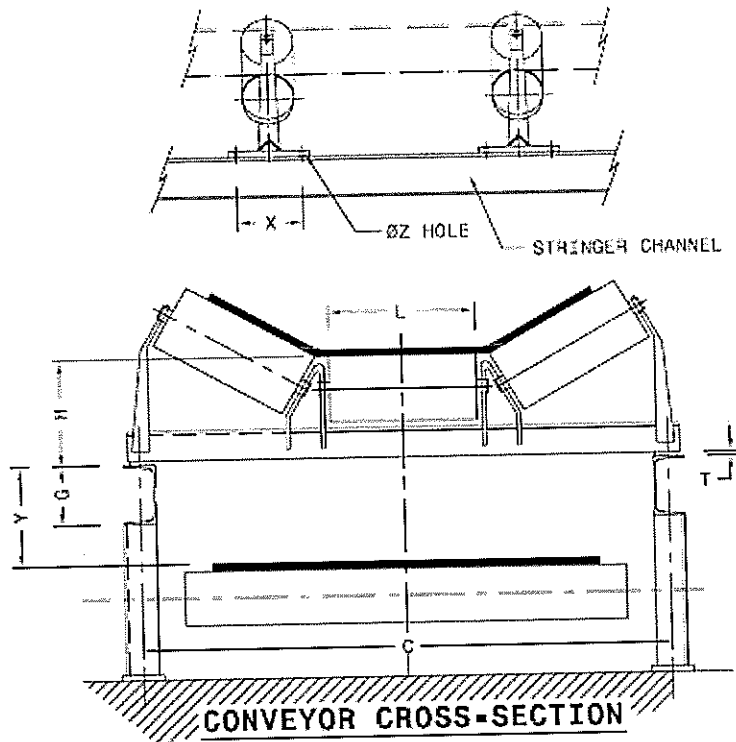


QUESTIONNAIRE

BELT WEIGHER



CONVEYOR DATA

Conveyor No.	: 1BC-3
Material Handled	: Uranium Ore
Bulk Density (Kg/M ³)	: 1.8 T/m ³
Moisture Content (%)	: 5 to 8%
Grain Size (mm)	: 300 mm
Temperature (°C)	: 30- 50 Deg. C
Conveyor Capacity (TPH)	: 370 TPH
Belt Speed (M/Sec)	: 0.8 m/sec
Belt Width (mm)	: 1200 mm
Belt Load (Kg/M)	:
Idler Spacing (mm)	: 1000 mm
Idler trough Angle (°)	: 30 Deg.
Idler Diameter (mm)	: 139.7 mm
Idler Weight / Set (Kg)	: 10.6 kg
Conveyor Inclination (°)	: 15 Deg.
Conveyor Length (M)	: 470 mtr