

8848

Annexure-4

Nameplate Specification of Ball Mill HT Motor

3-PHASE, 6600 VOLTS, 50Hz. A.C. SLIP RING INDUCTION MOTOR

KW (HP): 650 (871),

FRAME: TPR450E,

R.P.M.: 1486,

M/C NO.: 2071241,

AMPS: 71,

ROTOR VOLTAGE: 895 VOLTS,

ROTOR CURRENT: 430 AMPS,

INS. CLASS: F,

GD<sup>2</sup>: 119 Kg m<sup>2</sup>,

FULL EFF: 95.0%,

RATING: MCR,

Amb: 50°C,

ALT.: 1000 m,

ENCLOSURE: CACA (IP55), MAKE: CROMPTON GREAVES

Duty: S1,

Weight: 6500 kg.

BEARING:- DE: NU226 C3

NDE: NU221 C3 + 6221 C3

Yr. of Mfg : 02-08

*Ref*

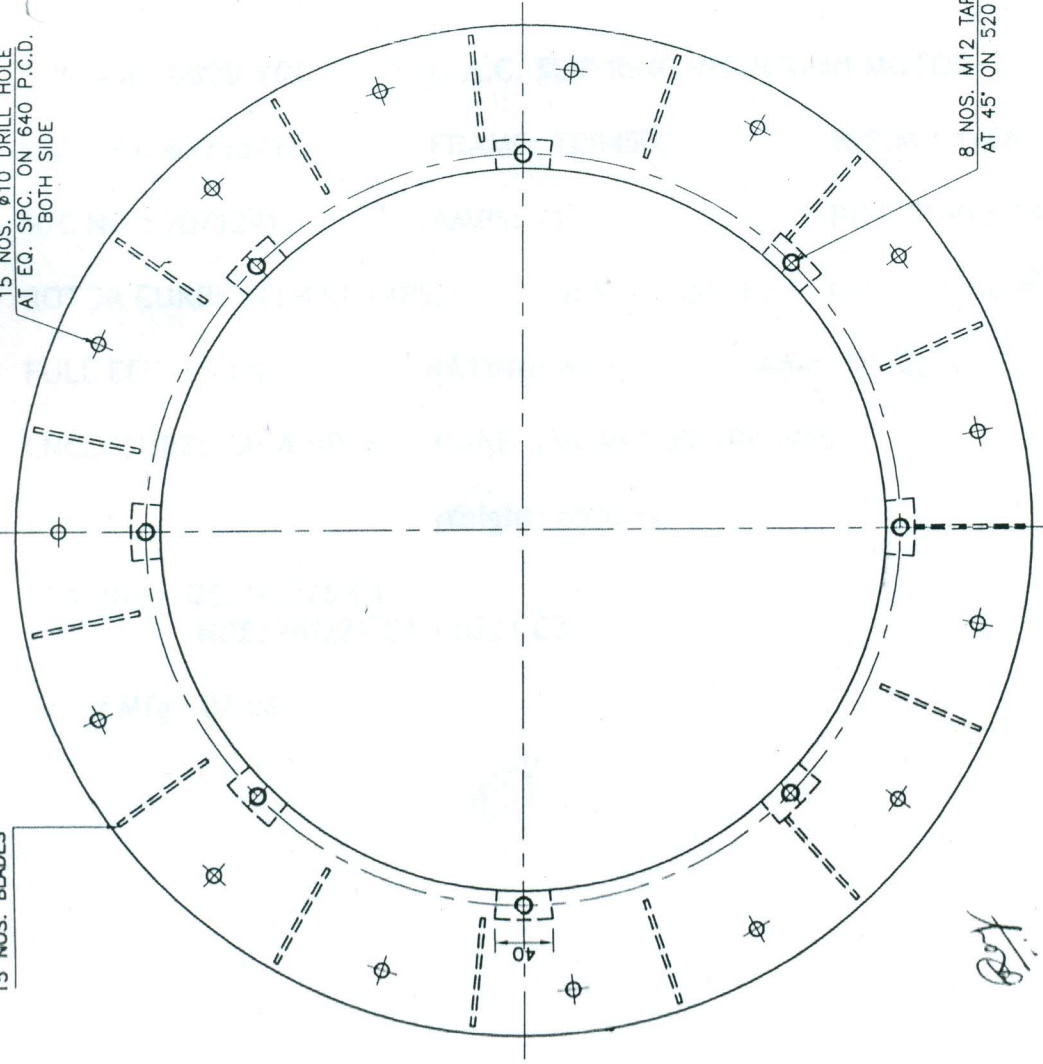
8848 Drawing Annexure-4

3 THK. 15 NOS. BLADES  
AT EQ. SPC.

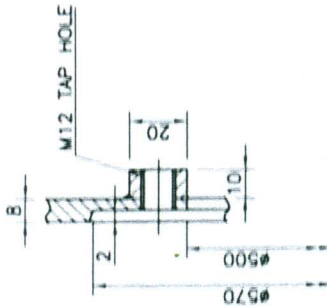
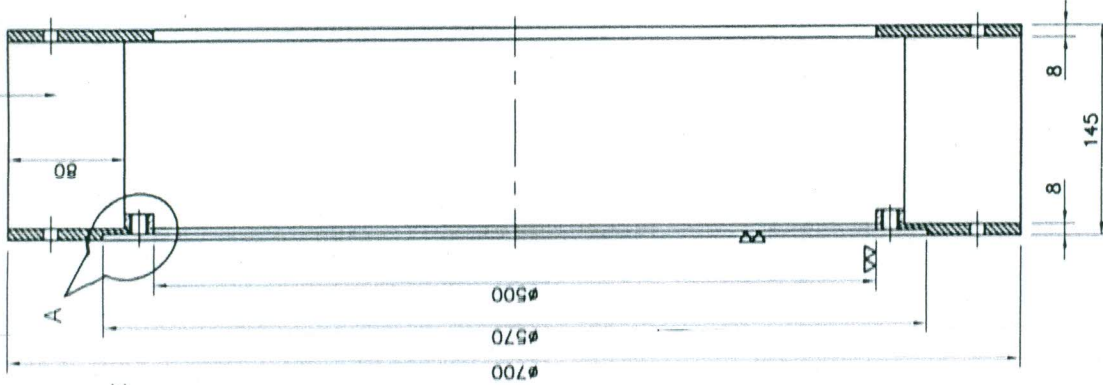
15 NOS. BLADES

15 NOS. Ø10 DRILL HOLE  
AT EQ. SPC. ON 640 P.C.D.  
BOTH SIDE

8 NOS. M12 TAP HOLE  
AT 45° ON 520 P.C.D.



FAN SHOULD BE DYNAMICALLY BALANCED



ENLARGED - A



URANIUM CORPORATION OF INDIA LTD. TURAMDIH MILL  
(A GOVT. OF INDIA ENTERPRISE, DEPT. OF ATOMIC ENERGY)

DRN. Rajesh 16.10.17 TITLE

CHECKED J.Roy

APPROVED G. DHAR

SCALE -

DIMENSIONS IN MM

DRG.NO.- MILL/TMD/ELECT.- 142

REV.-0

MATERIAL :- M.S

NOTE :- ABOVE FAN SHALL BE PAINTED WITH TWO COATS OF RED OXIDE & TWO COATS OF SMOKE GRAY PAINT